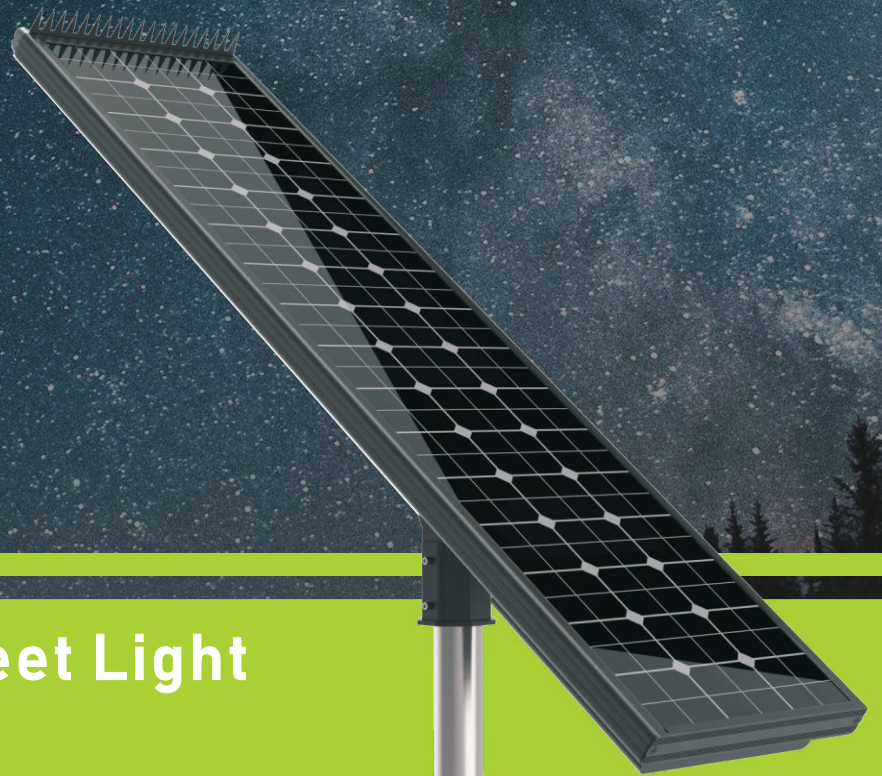


Scowatt



## All In One Solar Street Light

**Power: 40W/60W**

SK-SERIES



# SK Series All IN ONE SOLAR STREET LIGHT

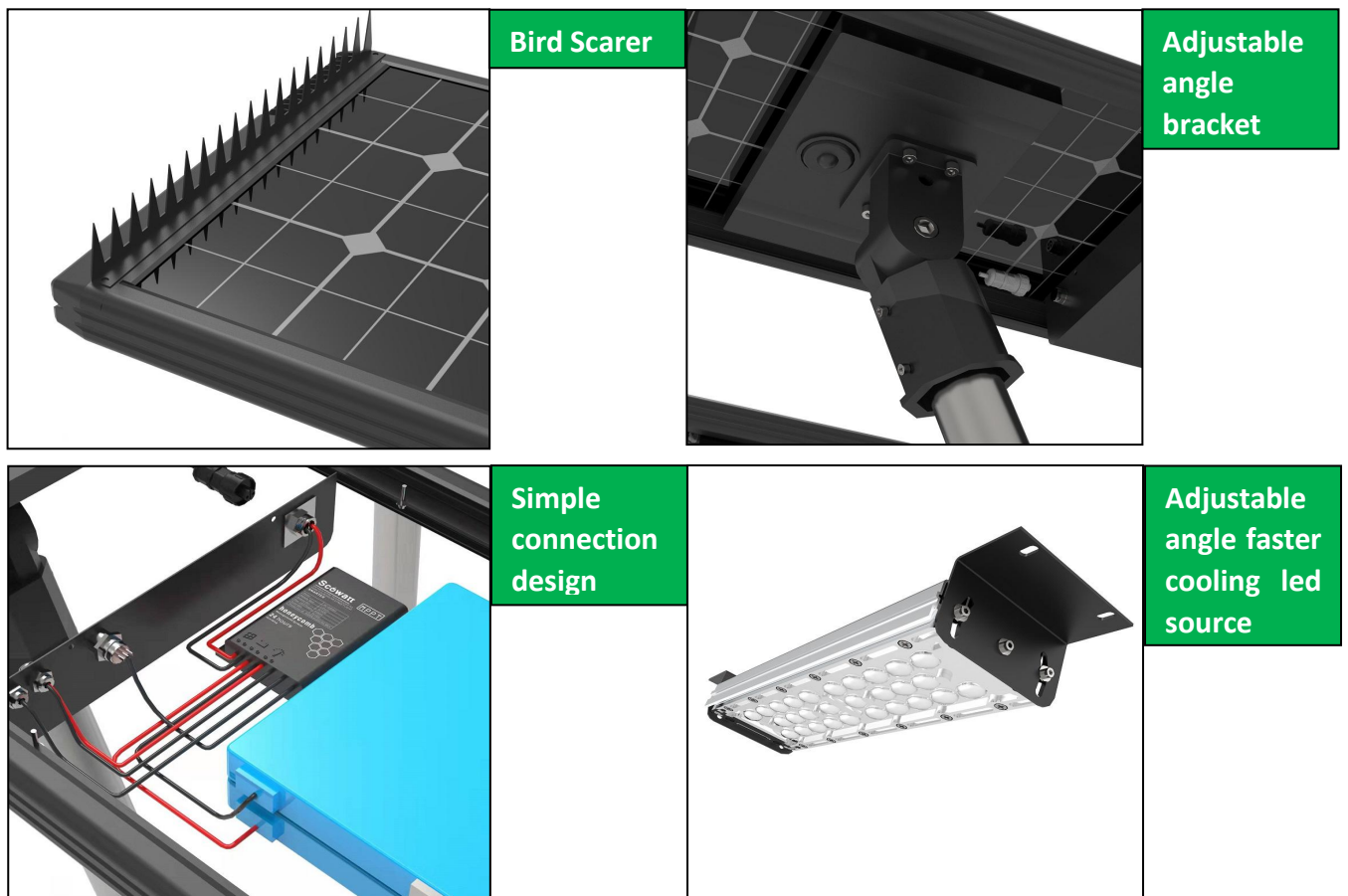
## Product Description

**SK Series solar street light** is a simplest solar street light which integrated by high efficient PV module, rechargeable battery and modular LED source and smart controller.

- Using bifacial solar panel design receive more sunshine .
- Suitable for any remote region,non electricity supply place.
- Deep cycle battery, charge and discharge over 2000 times
- Configurable with additional mains charger
- Continuously work 12 hours for 5-7 rainy days in intelligent mode

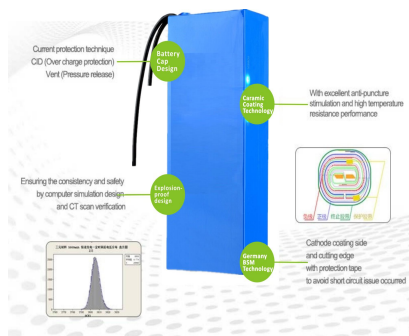


## Features & Advantages

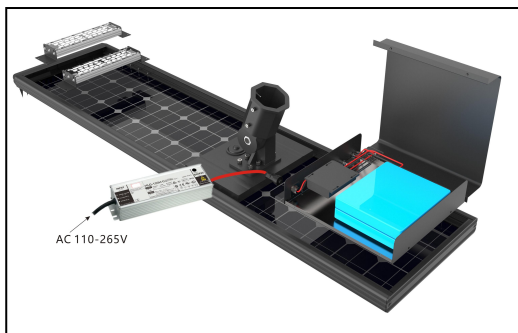


# SK Series All IN ONE SOLAR STREET LIGHT

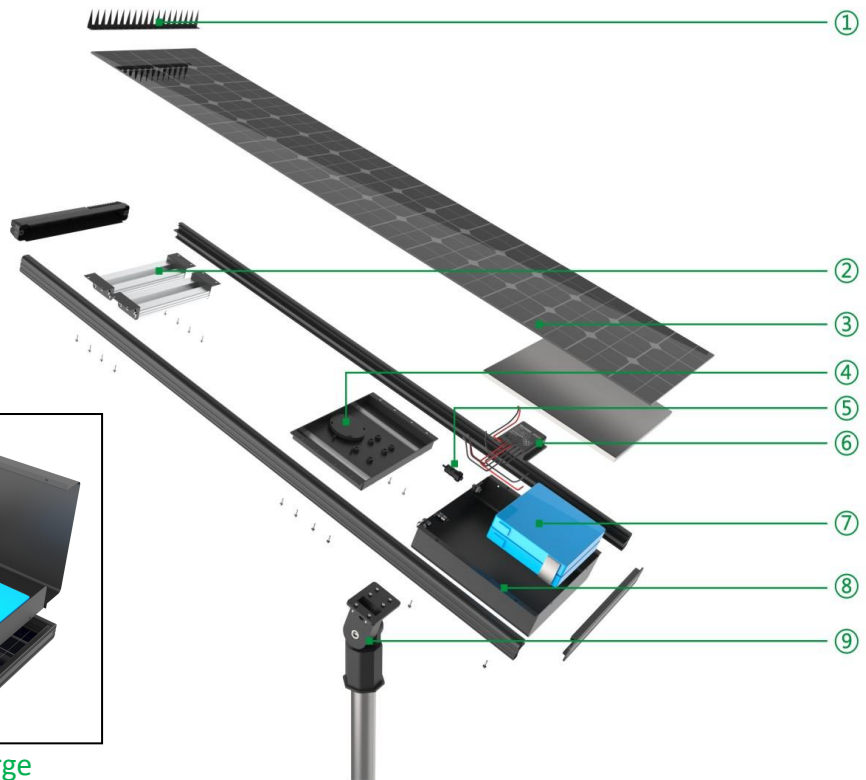
## Product details



Over 2000 times Cycle



Can use AC 220V driver charge battery when stock it too long

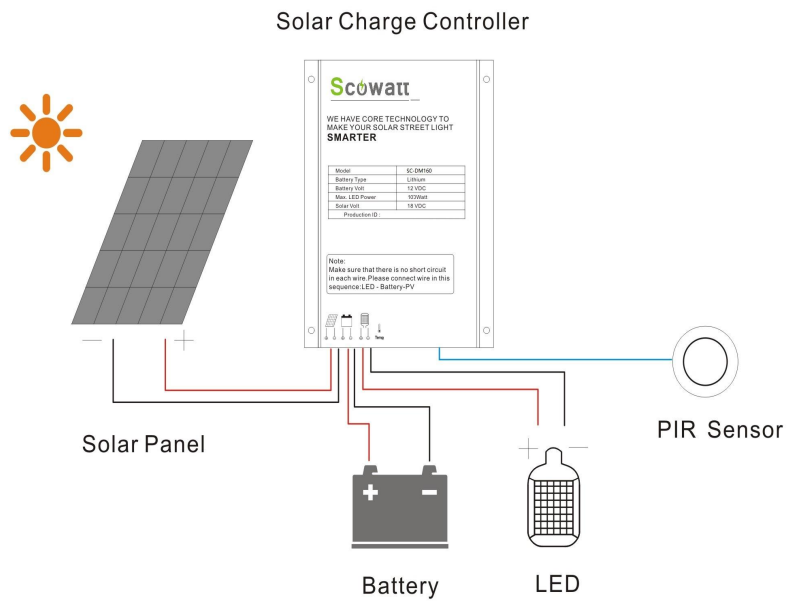


- ① **Bird scarer**, It can prevent birds from standing on the lamps, bird droppings or feathers block the solar panel and affect power generation. It can avoid the bird stand on the light.
- ② The independent aluminum alloy heat dissipation light source can quickly dissipate the heat of the LED, and it can be rotated 60° to make the lighting range wider. Use 5050 lumileds chips, have **over 220lm/watt efficiency**. Output more brightness, use lesser power.
- ③ **Bifacial solar panel** can get 20-30% more sunshine reflection from the ground.
- ④ **PIR / Microwave sensor**, can sensing people with bigger power and save energy when people leave. Also it can communicate with the remote control.
- ⑤ **Solar charging port / AC driver Charging port-can keep goods for long time**
- ⑥ **MPPT Charge controller**. MPPT technology can increase charging speed by 30%.
- ⑦ The **LiFePO4 lithium battery** has a lifespan of more than 2000 times, high safety factor, fireproof, and high temperature resistance.
- ⑧ **Metal battery case**, the entire battery case is available as a maintenance accessory.
- ⑨ **Adjustable angle bracket**, made of aluminum alloy, anti-rust and anti-corrosion, the maximum load can reach 100kg

## Working way

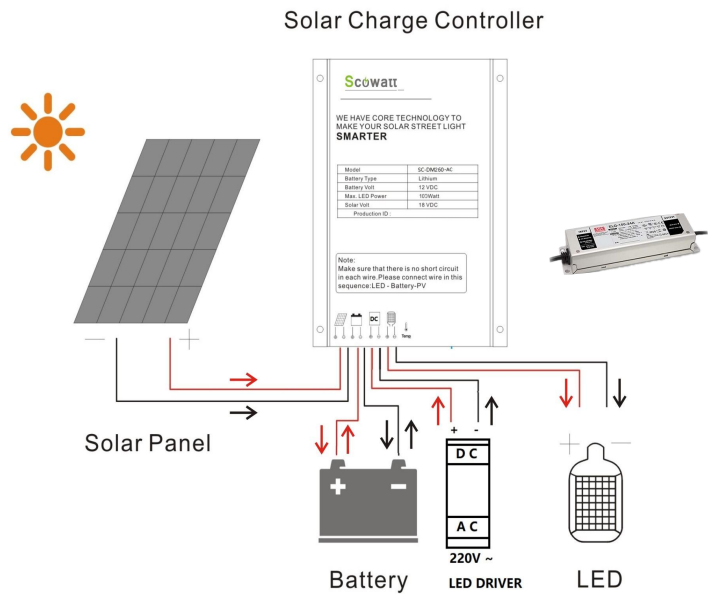
### 1 : Standard model

The off-grid solar street light system only absorbs solar energy and converts it into electric energy to charge the battery, and releases the battery energy to provide energy for the lamps at night. Work with PIR / Microwave sensor, Can set the output power and working time through the remote. The controller will check the charging status of the solar panel, if there is no charging, it is considered night and the light will be turned on. If the solar panel is detected to be charging, it is considered to be daytime and the lights will be turned off



### 2 :On-grid model

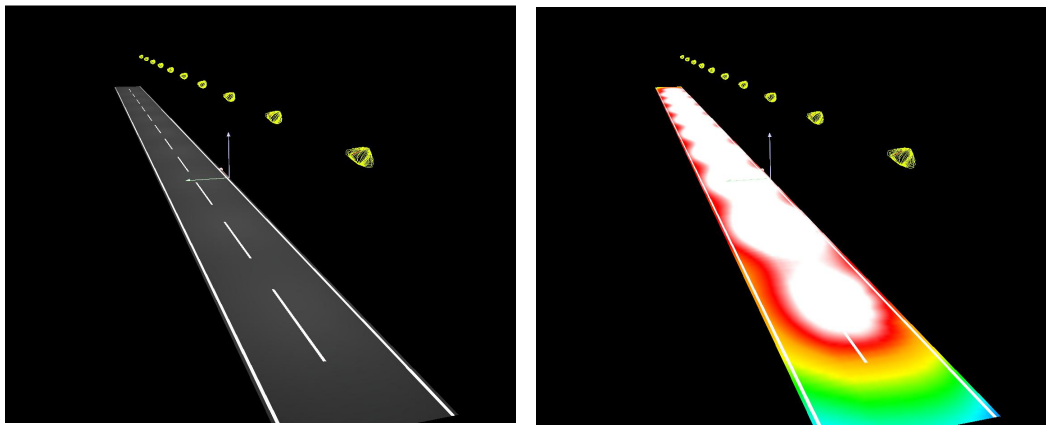
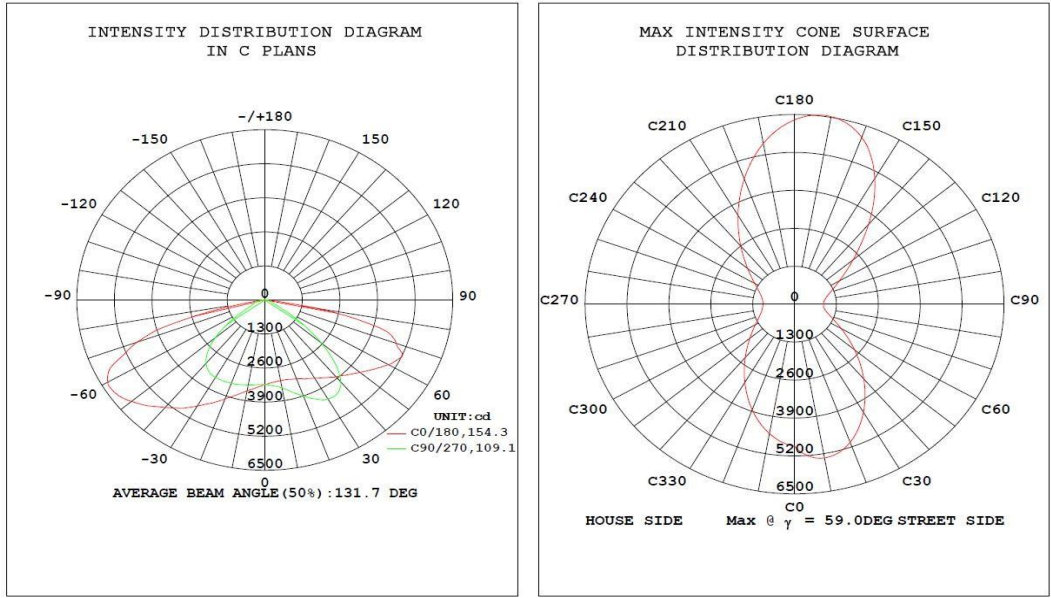
The on-grid solar complementary model add one led driver . The light can be supply by solar or grid mains , charger controller will switch to the grid mains supply when the battery voltage lower than the standard working voltage at night. It will switch back to solar supply when the solar charge the battery higher than working voltage. So it can be connected to the mains under conditions, and can maintain high-power brightness work in cloudy and rainy weather, reducing the power drop caused by insufficient sunlight.



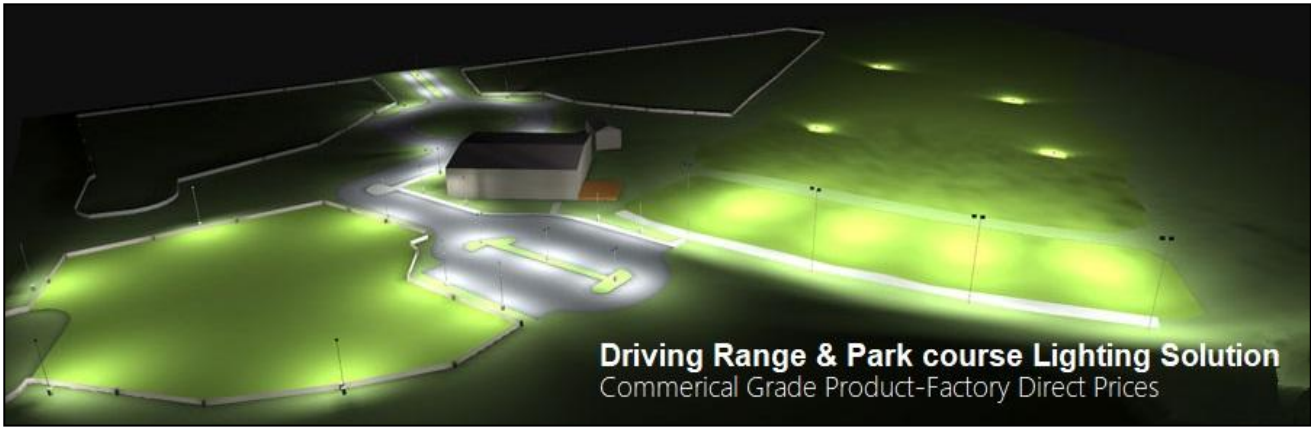
# SK Series All IN ONE SOLAR STREET LIGHT

## Photometric design

We can help customer planning and analyzing of street lights can be done by using lighting design software, which allows lighting simulations. It uses rendering, the process of generating an image from a model, by means of computer programs resulting in different tools for measuring the simulated light levels. Like the DIALUX evo.



Using higher lumens chips , Install 8m height , average illumination can reach 30lux



# SK Series All IN ONE SOLAR STREET LIGHT

## Remote control & Communication

Use the remote, the user can query the working state of the solar street light anytime . If the operation was not working perfect, the working parameters of the street light can be modified through the remote , including voltage, current, power, working time, etc. at the same time, it can also feed back the faults of the solar street light, so that the user can complete the maintenance without dismantling the lamp.

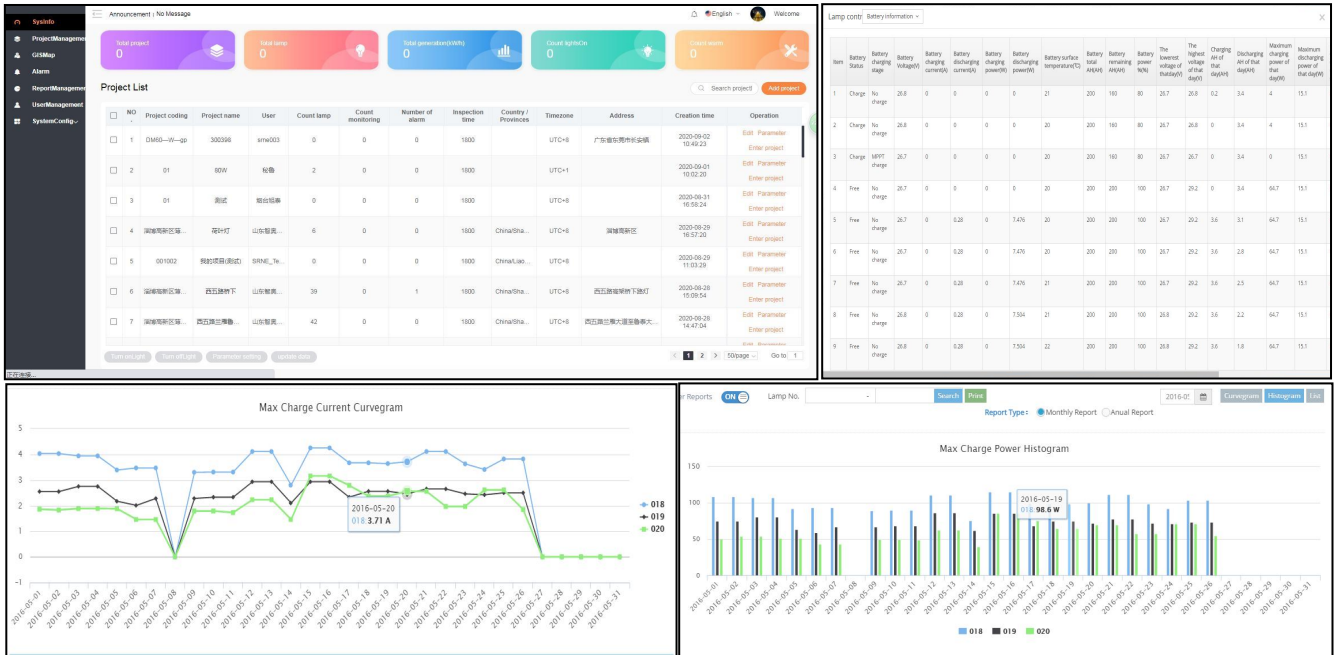


Items	Specification	By Remote
Parameter Setting	Reset output power,voltage ,current,working time.	√
Test street light	Turn on / off the light ,Can show 30%,50%70%100% brightness	√
Acceptance project	Turn off the light ,the light will work from next night with full battery capacity .	√
Failure feedback	Communicate operating status,will show you error code	√



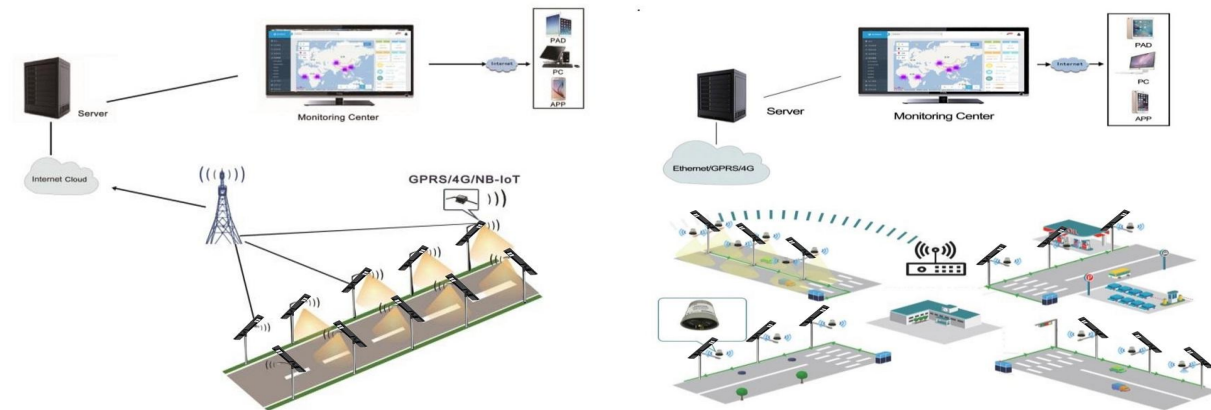
# SK Series All IN ONE SOLAR STREET LIGHT

## IoT Smart Solar Lighting control system



According to the operation record, can know the weather and the traffic flow situation. The system can pre-set one or more lighting modes according to different time of day and traffic flow, automatically turn on or off any lamp, and adjust the switching time and illumination according to environmental requirements to achieve the purpose of energy saving and consumption reduction.

## Various system construction methods and control terminals



Communication network can use GPRS, 4G, NB-IOT solutions, 433M, Lorawan and Zigbee plan. Can set the group according to local market situation.

More details contact technical support



App for IOS & Android

# SK Series All IN ONE SOLAR STREET LIGHT

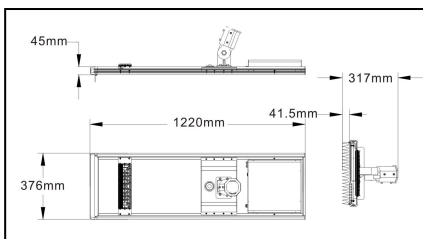
## Technical Parameter

1. Operating Time : 12 hours, Energy saving mode 3-7days
2. Sensor mode: 30% of intensity at first 4 hrs,100% bright when people / car pass by, The rest of time will use 30% of intensity ,and 70% of intensity when people pass by.
3. Working mode : Light control + Motion Sensor/Time Control /PIR sensor
4. Housing : Die-casting aluminum, Anti-corrossion spray
5. CCT : 3000K/4000K/5500K/6500K available.CRI >70
6. System Voltage :6.4V/12.8V
7. Life hours: >80,000 hrs

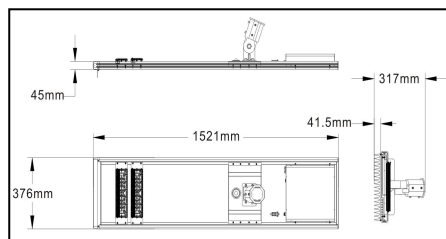


Model	Replace for metal halide light	Lumens	Solar panel	Battery	Optical Lens	IP	Installation Height	Fixture Dimension	Carton Dimension
SC-SK-40W-E	80-120W MHL	6400lm	70W/18V	332wh	5050 chips/ 60°*130° /70°*150°	IP65	5-7m	376*1220*317mm	400*1250*180mm
SC-SK-40W-H	80-120W MHL	7200lm	70W/18V	403wh			5-7m	376*1220*317mm	400*1250*180mm
SC-SK-60W-E	160-200W MHL	9600lm	90W/18V	403wh			6-8m	376*1521*317mm	400*1550*180mm
SC-SK-60W-H	160-200W MHL	10800lm	90W/18V	672wh			6-8m	376*1521*317mm	400*1550*180mm
SC-SK-P60W-E	160-200W MHL	9600lm	90W/18V	403wh			6-8m	376*1558*317mm	400*1590*180mm
SC-SK-P60W-H	160-200W MHL	10800lm	90W/18V	672wh			6-8m	376*1558*317mm	400*1590*180mm

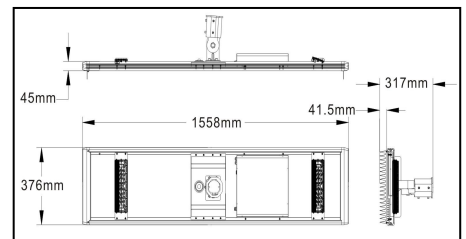
## Dimensions



40W



60W



P60W





*SK Series All IN ONE SOLAR STREET LIGHT*

Applications

